

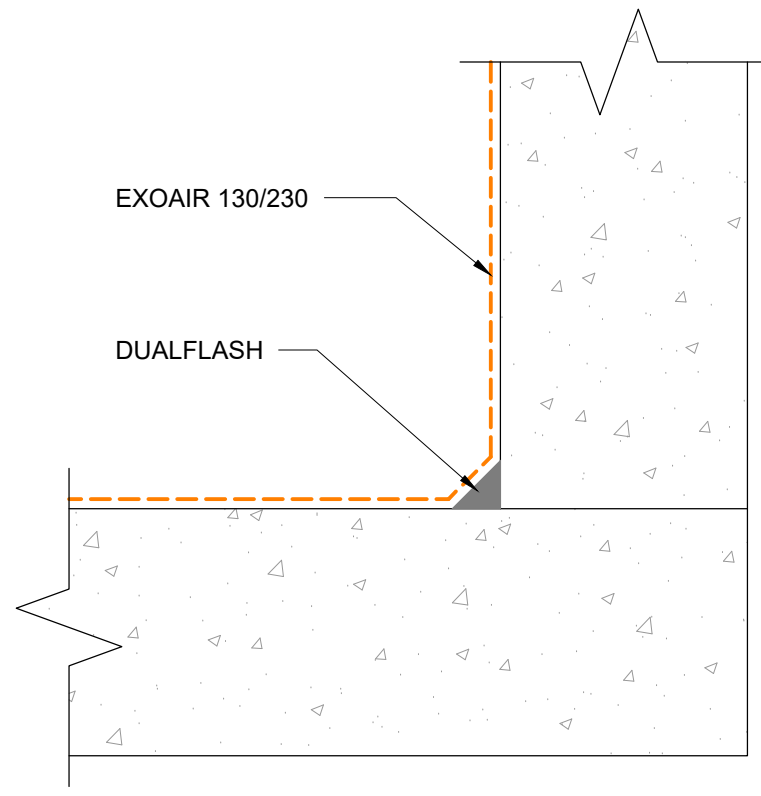
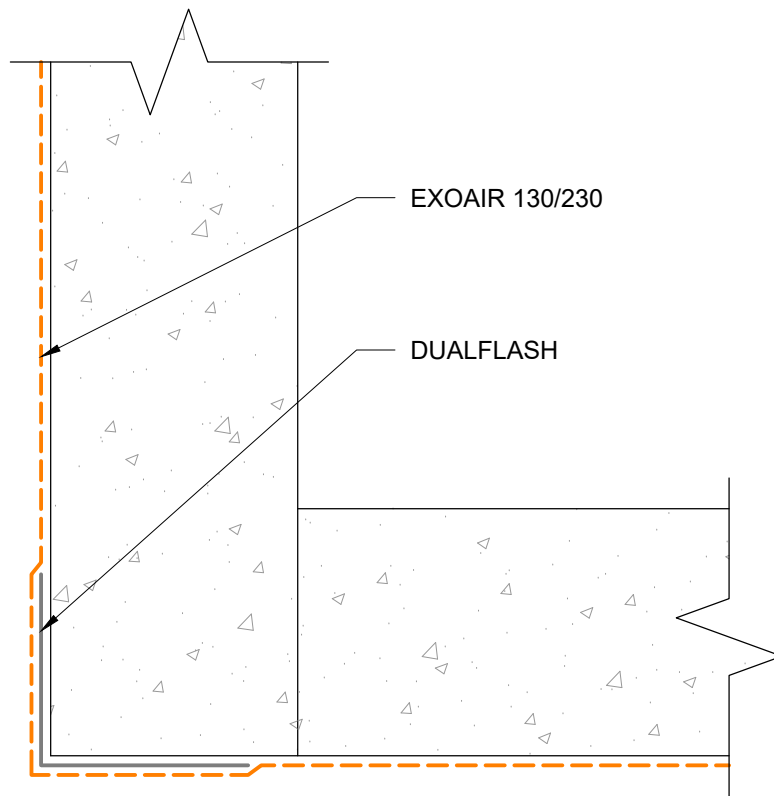
NOTES: EXOAIR PRIMER MUST BE USED WITH EXOAIR 110.

This detail is for general informational purposes only. The project design professional determines, in its sole discretion, whether this detail or a functionally equivalent detail is best suited for the project with respect to any architecture, engineering, and design requirements, including any local building code requirements. If this document is not reviewed and the product is not approved for use by a licensed design professional, the customer agrees that the detail may contain substantive flaws requiring correction, and hereby releases Tremco CPG Inc. from any and all liability related to the design and installation of the product. This detail is subject to change without notice. Contact Tremco to ensure you have the most recent version.

DualFlash

Detail: Brick Lintel			File Name: DF-BL-01
Drawn by: HDE	Checked by: SG	Scale: NTS	
Revision #: 0	Revised by: NA	Date: 5/15/2024	





This detail is for general informational purposes only. The project design professional determines, in its sole discretion, whether this detail or a functionally equivalent detail is best suited for the project with respect to any architecture, engineering, and design requirements, including any local building code requirements. If this document is not reviewed and the product is not approved for use by a licensed design professional, the customer agrees that the detail may contain substantive flaws requiring correction, and hereby releases Tremco CPG Inc. from any and all liability related to the design and installation of the product. This detail is subject to change without notice. Contact Tremco to ensure you have the most recent version.

DualFlash



Tremco Technical Support: 866-209-2404

Detail: Inside/Outside Corner

Drawn by: HDE

Revision #: 0

Checked by: SG

Revised by: NA

Scale: NTS

Date: 5/15/2024

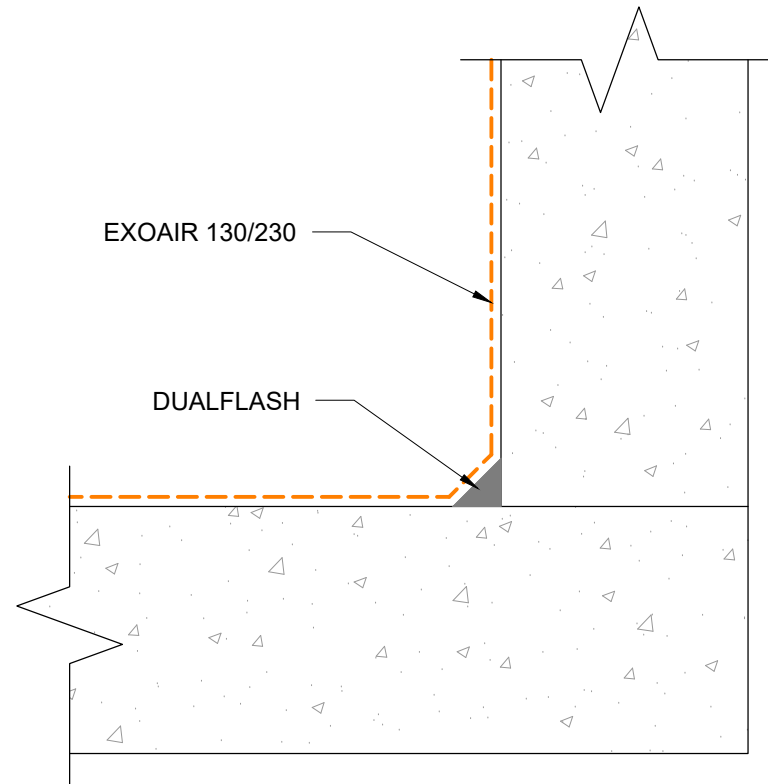
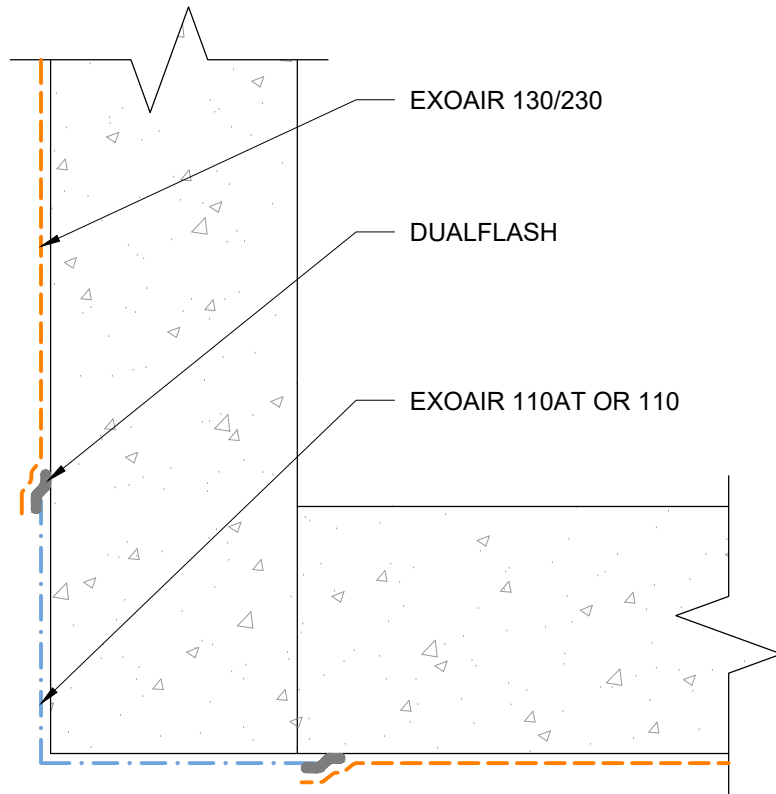
www.tremcocpg.com

File Name:

DF-C-01





Construction Products Group

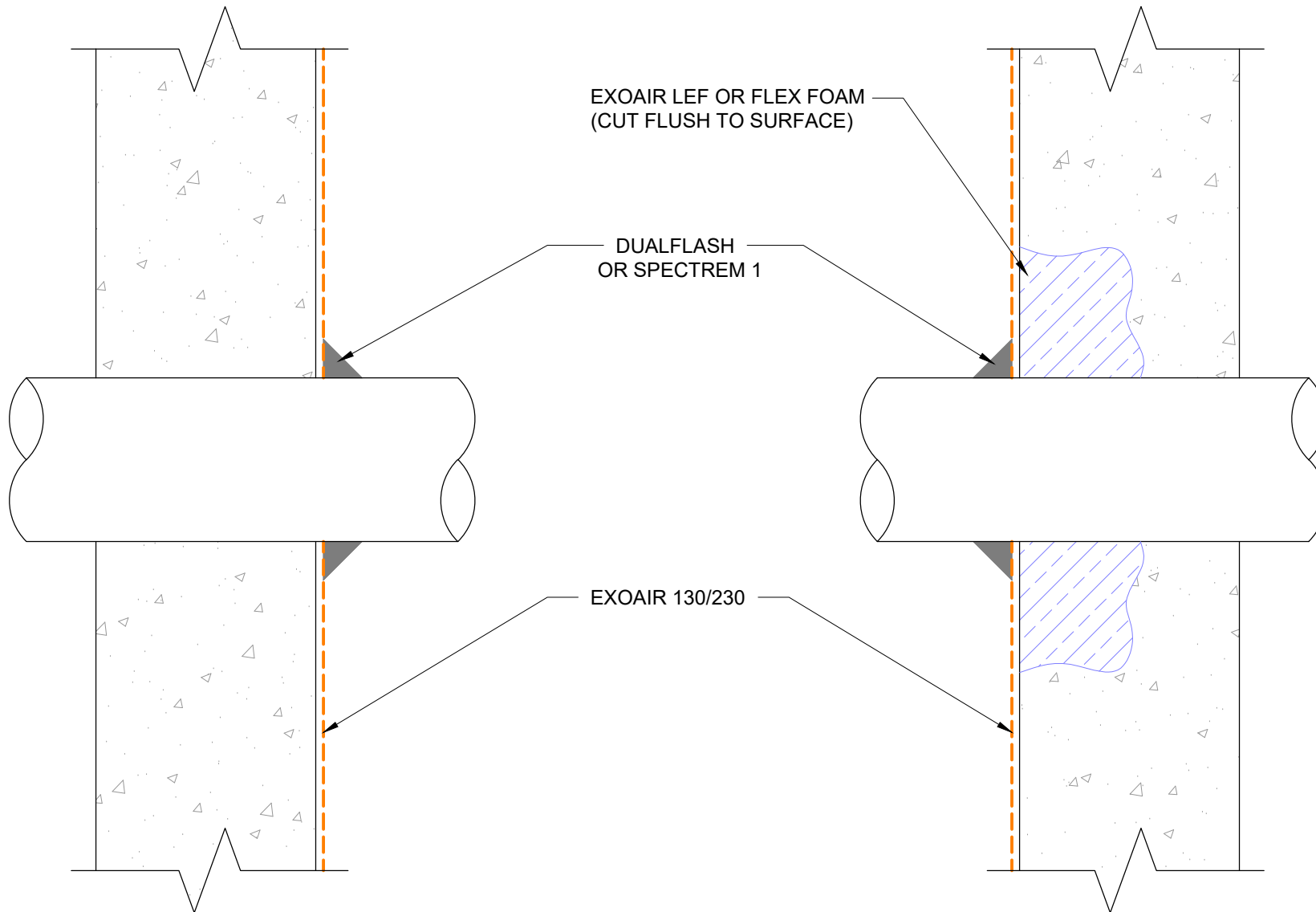


NOTES: EXOAIR PRIMER MUST BE USED WITH EXOAIR 110.

This detail is for general informational purposes only. The project design professional determines, in its sole discretion, whether this detail or a functionally equivalent detail is best suited for the project with respect to any architecture, engineering, and design requirements, including any local building code requirements. If this document is not reviewed and the product is not approved for use by a licensed design professional, the customer agrees that the detail may contain substantive flaws requiring correction, and hereby releases Tremco CPG Inc. from any and all liability related to the design and installation of the product. This detail is subject to change without notice. Contact Tremco to ensure you have the most recent version.

DualFlash

 Tremco Technical Support: 866-209-2404	Detail: Inside/Outside Corner - ExoAir 110/110AT Option			File Name:	 Construction Products Group
	Drawn by: HDE	Checked by: SG	Scale: NTS	DF-C-02	
	Revision #: 0	Revised by: NA	Date: 5/15/2024		
<small>www.tremcocpg.com</small>					



This detail is for general informational purposes only. The project design professional determines, in its sole discretion, whether this detail or a functionally equivalent detail is best suited for the project with respect to any architecture, engineering, and design requirements, including any local building code requirements. If this document is not reviewed and the product is not approved for use by a licensed design professional, the customer agrees that the detail may contain substantive flaws requiring correction, and hereby releases Tremco CPG Inc. from any and all liability related to the design and installation of the product. This detail is subject to change without notice. Contact Tremco to ensure you have the most recent version.

DualFlash

Detail: Penetration - Option 1			File Name:
Drawn by: HDE	Checked by: SG	Scale: NTS	DF-P-01
Revision #: 0	Revised by: NA	Date: 5/15/2024	

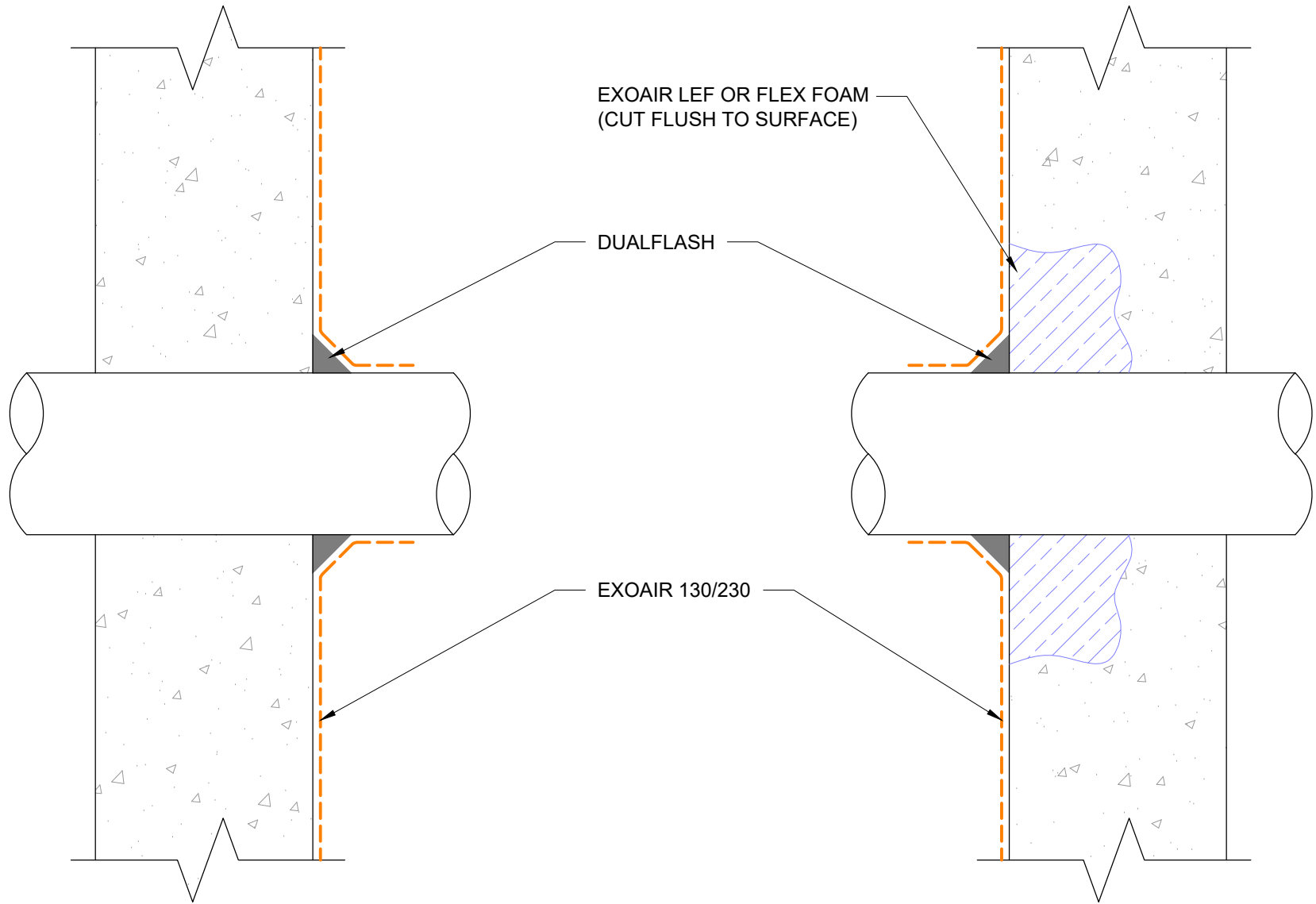


Tremco Technical Support: 866-209-2404

www.tremcocpg.com



Construction Products Group



This detail is for general informational purposes only. The project design professional determines, in its sole discretion, whether this detail or a functionally equivalent detail is best suited for the project with respect to any architecture, engineering, and design requirements, including any local building code requirements. If this document is not reviewed and the product is not approved for use by a licensed design professional, the customer agrees that the detail may contain substantive flaws requiring correction, and hereby releases Tremco CPG Inc. from any and all liability related to the design and installation of the product. This detail is subject to change without notice. Contact Tremco to ensure you have the most recent version.

DualFlash

Detail: Penetration - Option 2

Drawn by: HDE

Checked by: SG

Scale: NTS

Revision #: 0

Revised by: NA

Date: 5/15/2024

File Name:

DF-P-02

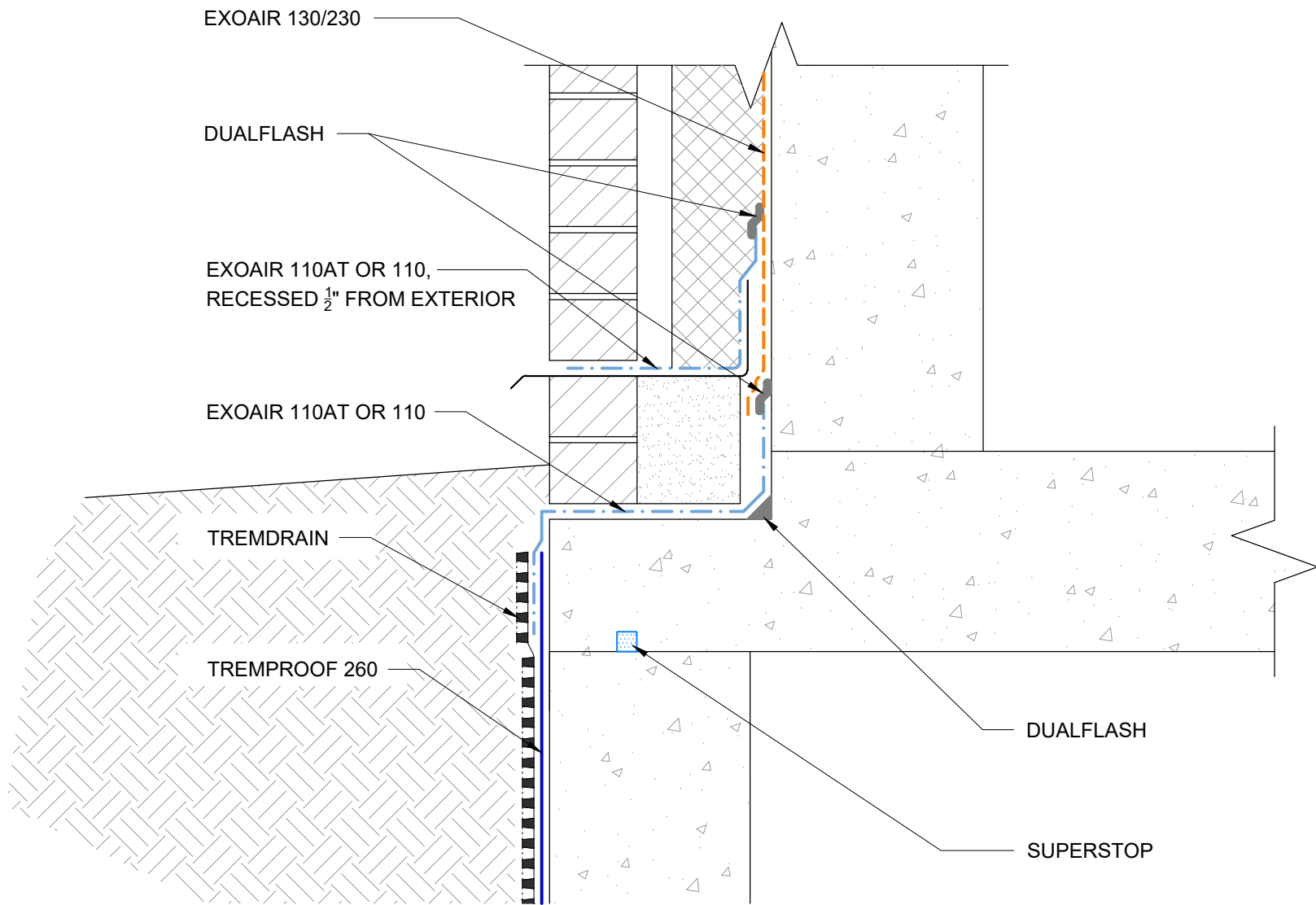


Tremco Technical Support: 866-209-2404



Construction Products Group

www.tremcocpg.com



NOTES: EXOAIR PRIMER MUST BE USED WITH EXOAIR 110.

This detail is for general informational purposes only. The project design professional determines, in its sole discretion, whether this detail or a functionally equivalent detail is best suited for the project with respect to any architecture, engineering, and design requirements, including any local building code requirements. If this document is not reviewed and the product is not approved for use by a licensed design professional, the customer agrees that the detail may contain substantive flaws requiring correction, and hereby releases Tremco CPG Inc. from any and all liability related to the design and installation of the product. This detail is subject to change without notice. Contact Tremco to ensure you have the most recent version.

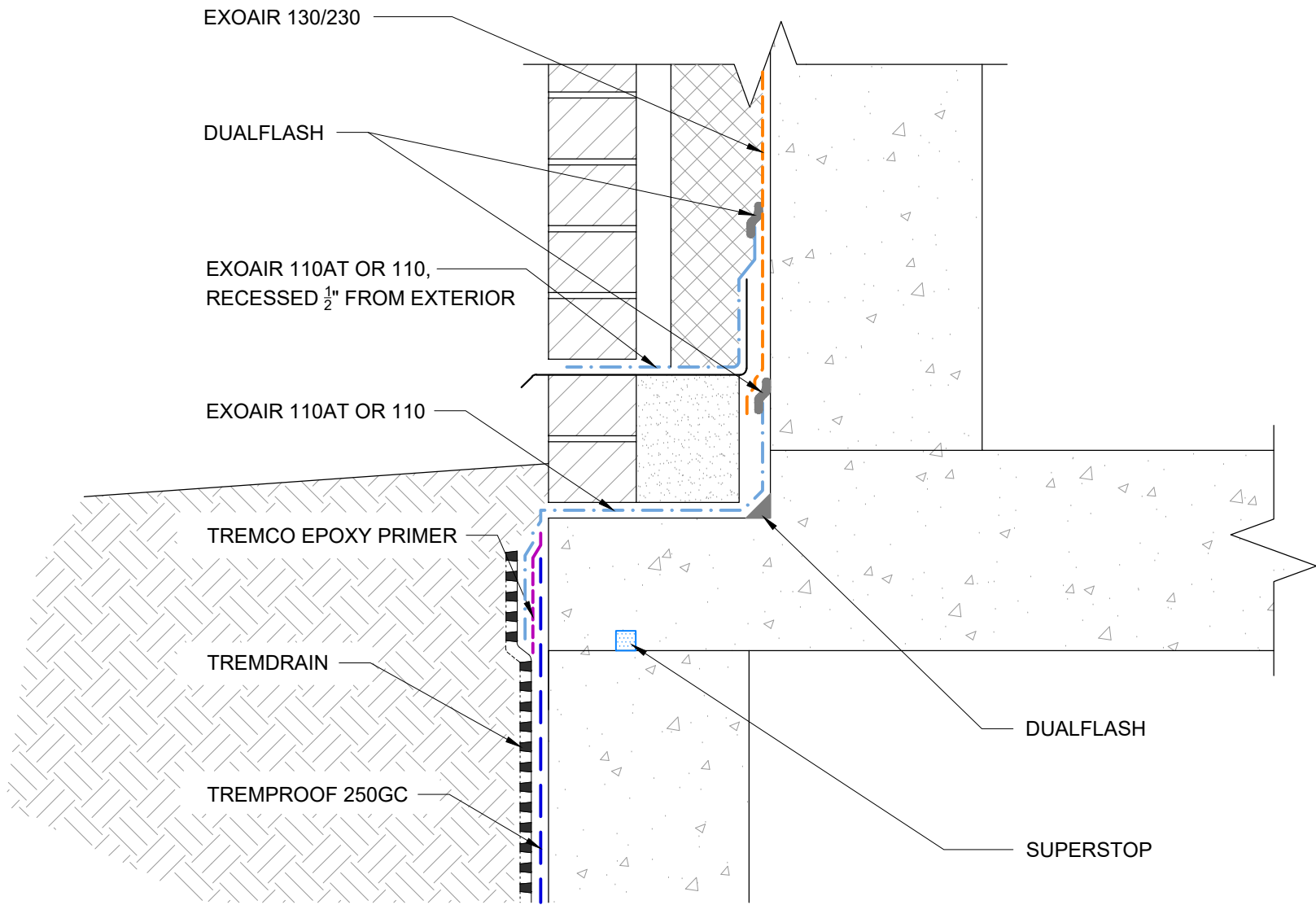
DualFlash

Detail: Impermeable Fluid Transition to TREMproof 260			File Name:
Drawn by: HDE	Checked by: SG	Scale: NTS	DF-T-01
Revision #: 0	Revised by: NA	Date: 5/15/2024	
<small>www.tremcocpg.com</small>			



Tremco Technical Support: 866-209-2404





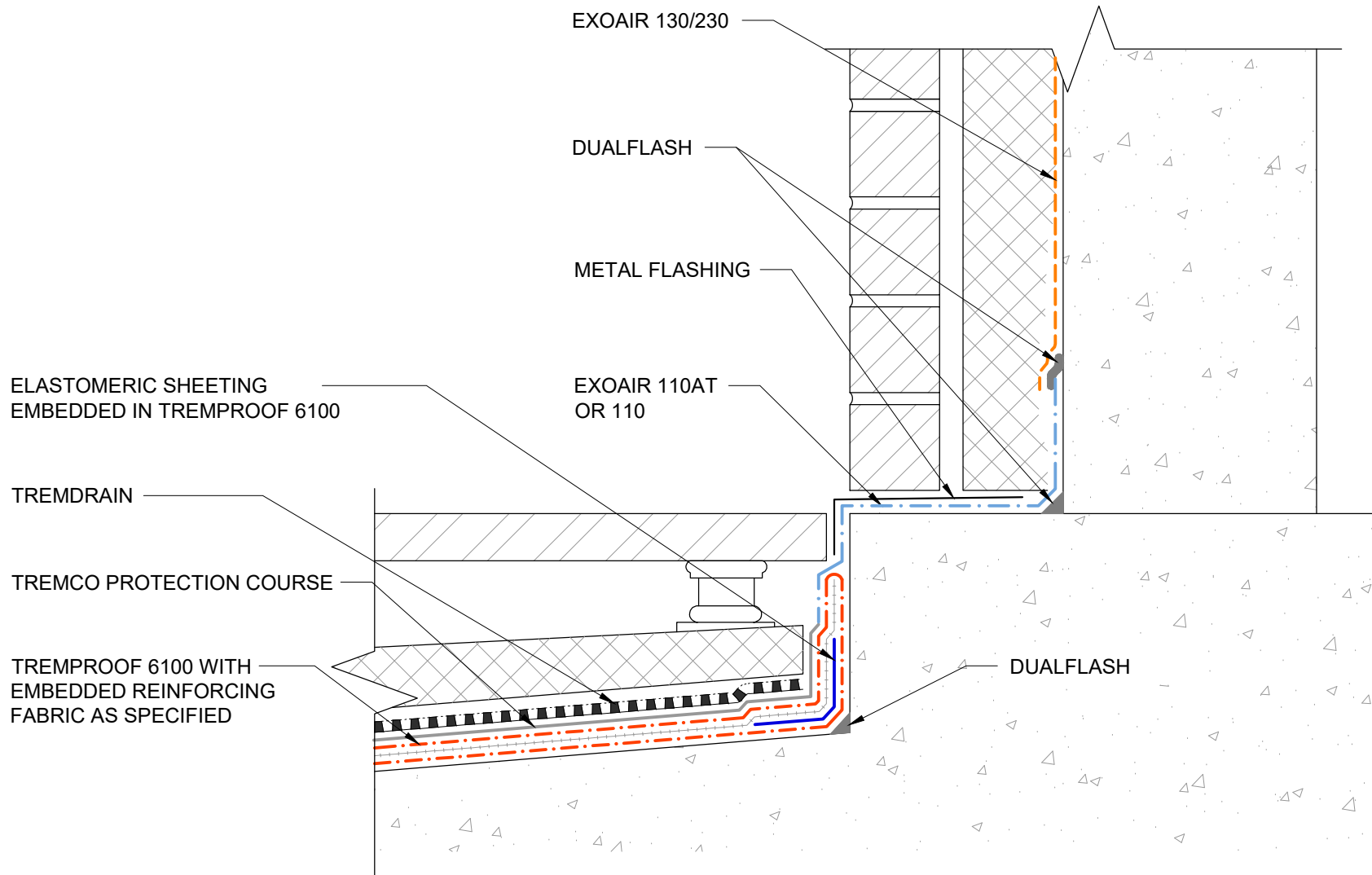
NOTES: EXOAIR PRIMER MUST BE USED WITH EXOAIR 110.

This detail is for general informational purposes only. The project design professional determines, in its sole discretion, whether this detail or a functionally equivalent detail is best suited for the project with respect to any architecture, engineering, and design requirements, including any local building code requirements. If this document is not reviewed and the product is not approved for use by a licensed design professional, the customer agrees that the detail may contain substantive flaws requiring correction, and hereby releases Tremco CPG Inc. from any and all liability related to the design and installation of the product. This detail is subject to change without notice. Contact Tremco to ensure you have the most recent version.

DualFlash

Detail: Impermeable Fluid Transition to TREMproof 250GC			File Name:
Drawn by: HDE	Checked by: SG	Scale: NTS	DF-T-02
Revision #: 0	Revised by: NA	Date: 5/15/2024	







NOTES: EXOAIR PRIMER MUST BE USED WITH EXOAIR 110.

This detail is for general informational purposes only. The project design professional determines, in its sole discretion, whether this detail or a functionally equivalent detail is best suited for the project with respect to any architecture, engineering, and design requirements, including any local building code requirements. If this document is not reviewed and the product is not approved for use by a licensed design professional, the customer agrees that the detail may contain substantive flaws requiring correction, and hereby releases Tremco CPG Inc. from any and all liability related to the design and installation of the product. This detail is subject to change without notice. Contact Tremco to ensure you have the most recent version.

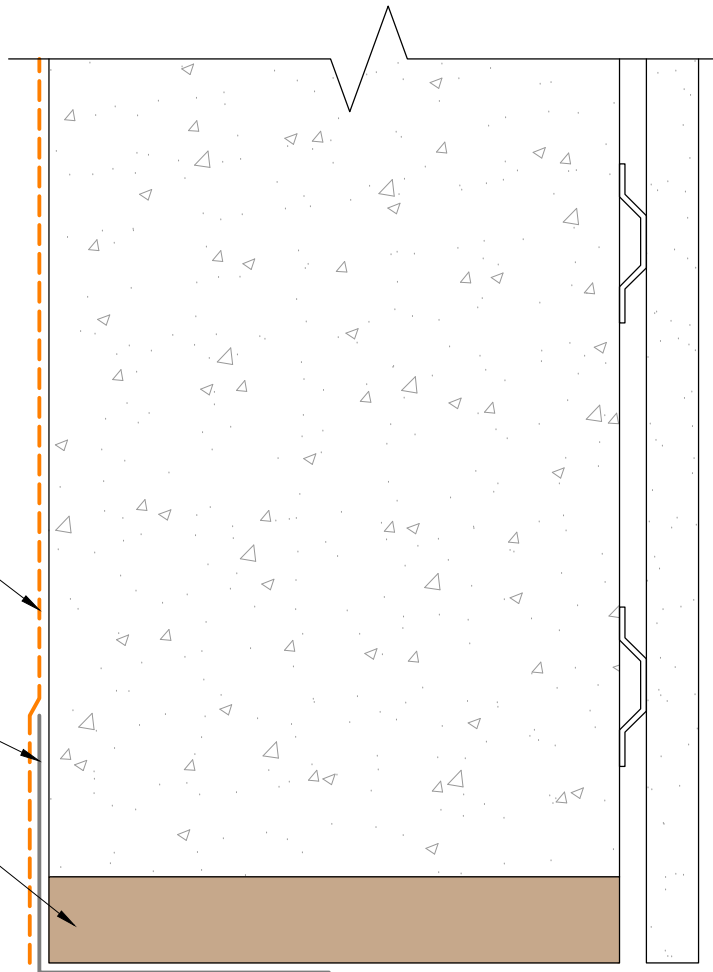
DualFlash

 Tremco Technical Support: 866-209-2404	Detail: Impermeable Fluid Transition to TREMProof 6100			File Name:
	Drawn by: HDE	Checked by: SG	Scale: NTS	DF-T-03
	Revision #: 0	Revised by: NA	Date: 5/15/2024	
www.tremcocpg.com				

EXOAIR 130/230

DUALFLASH

ENGINEERED FRAMING SYSTEM
BY PREBUCK LLC
OR FUNCTIONAL EQUIVALENT



NOTES: WINDOW AND BUILDING FACADE NOT SHOWN FOR CLARITY

This detail is for general informational purposes, only. The project design professional determines, in its sole discretion, whether this detail or a functionally equivalent detail is best suited for the project with respect to any architecture, engineering, and design requirements, including any local building code requirements. If this document is not reviewed and the product is not approved for use by a licensed design professional, the customer agrees that the detail may contain substantive flaws requiring correction, and hereby releases Tremco CPG Inc. from any and all liability related to the design and installation of the product. This detail is subject to change without notice. Contact Tremco to ensure you have the most recent version.

DualFlash



Tremco Technical Support: 866-209-2404

Detail: Head

Drawn by: HDE

Revision #: 0

Checked by: SG

Revised by: NA

Scale: NTS

Date: 5/15/2024

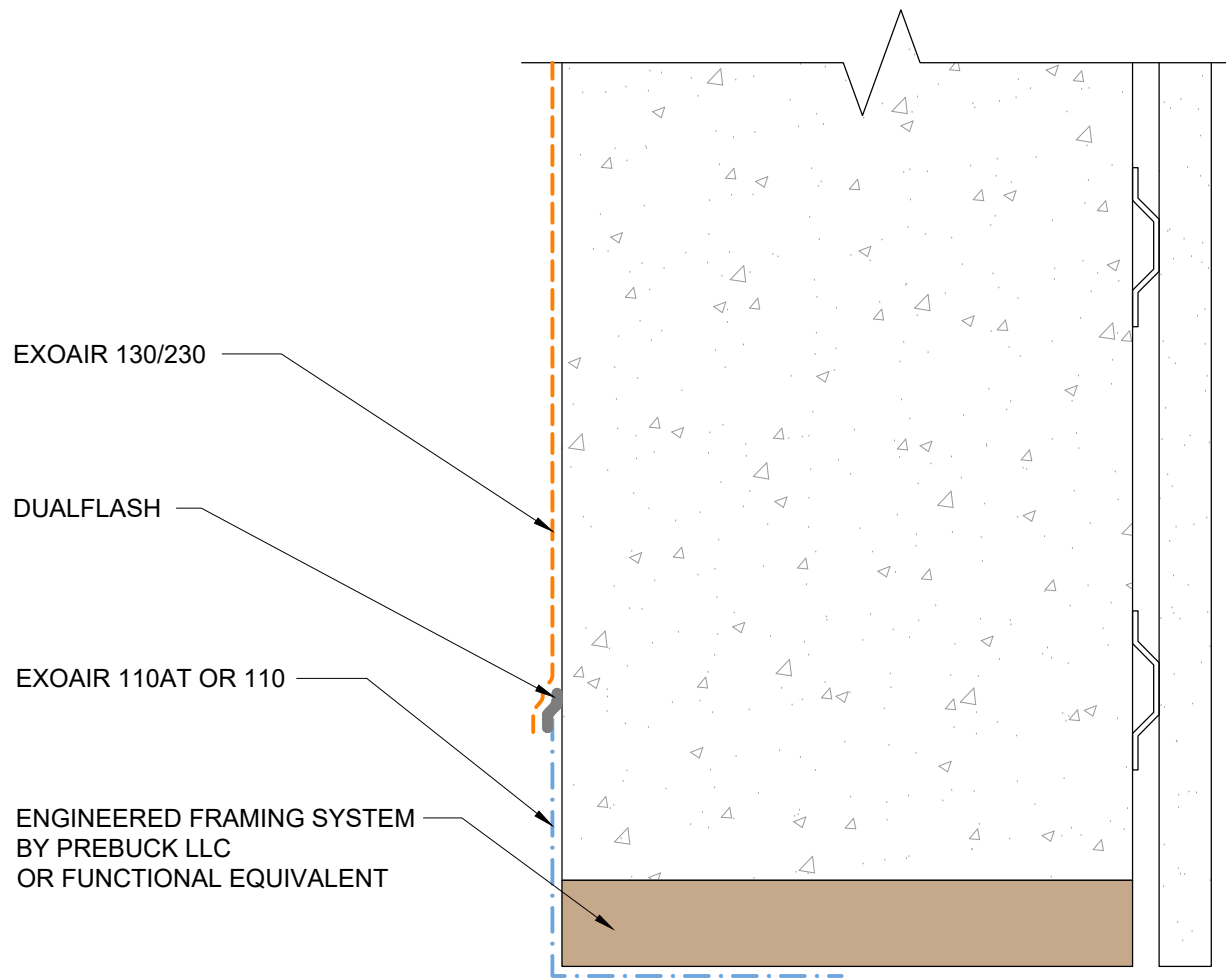
File Name:

DF-WH-01

www.tremcocpg.com



Construction Products Group





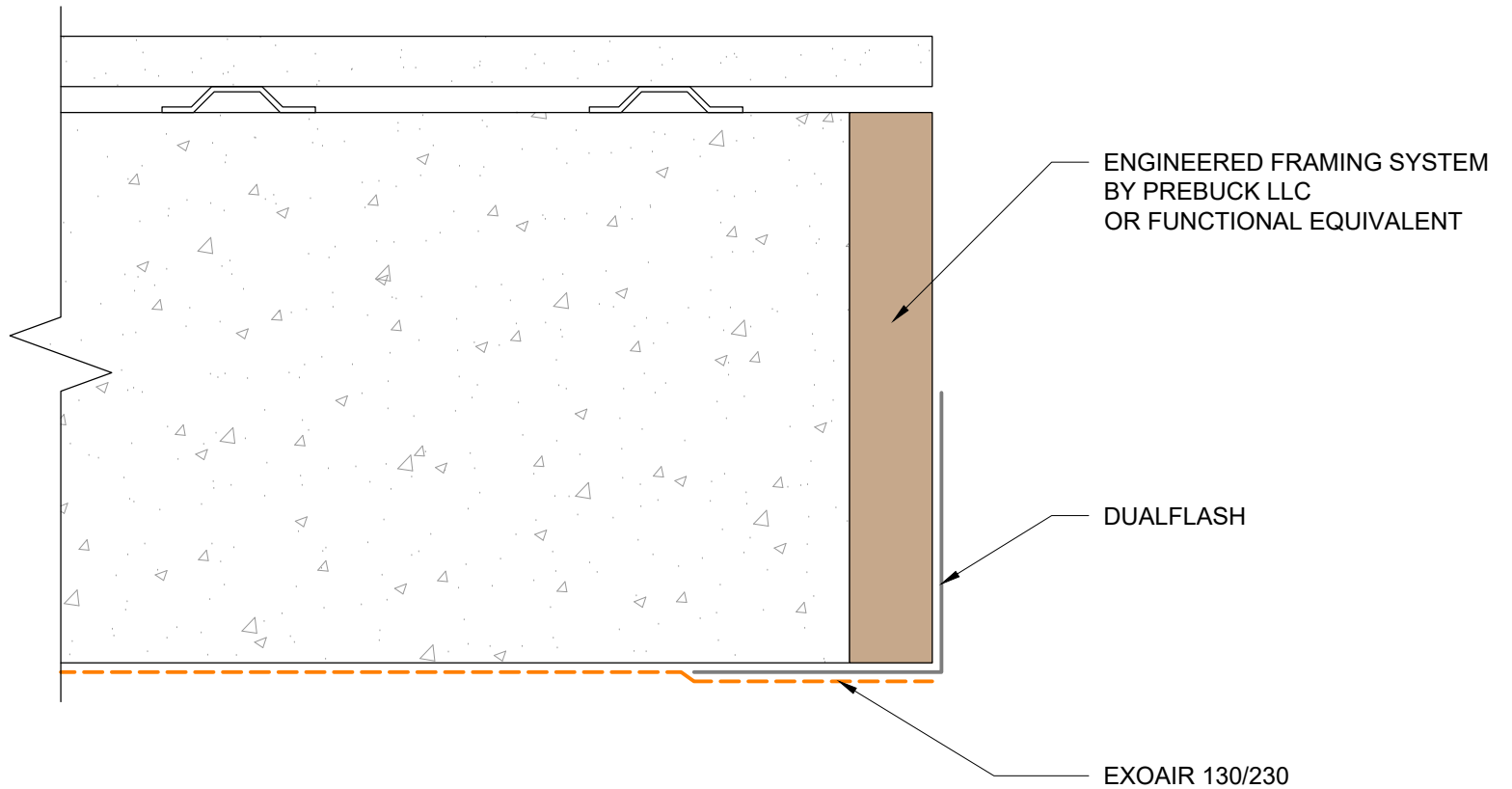
NOTES: WINDOW AND BUILDING FACADE NOT SHOWN FOR CLARITY

EXOAIR PRIMER MUST BE USED WITH EXOAIR 110

This detail is for general informational purposes, only. The project design professional determines, in its sole discretion, whether this detail or a functionally equivalent detail is best suited for the project with respect to any architecture, engineering, and design requirements, including any local building code requirements. If this document is not reviewed and the product is not approved for use by a licensed design professional, the customer agrees that the detail may contain substantive flaws requiring correction, and hereby releases Tremco CPG Inc. from any and all liability related to the design and installation of the product. This detail is subject to change without notice. Contact Tremco to ensure you have the most recent version.

DualFlash



 Tremco Technical Support: 866-209-2404	Detail: Head - ExoAir 110/110AT Option			File Name:	 Construction Products Group
	Drawn by: HDE	Checked by: SG	Scale: NTS	DF-WH-02	
	Revision #: 0	Revised by: NA	Date: 5/15/2024		
<small>www.tremcocpg.com</small>					

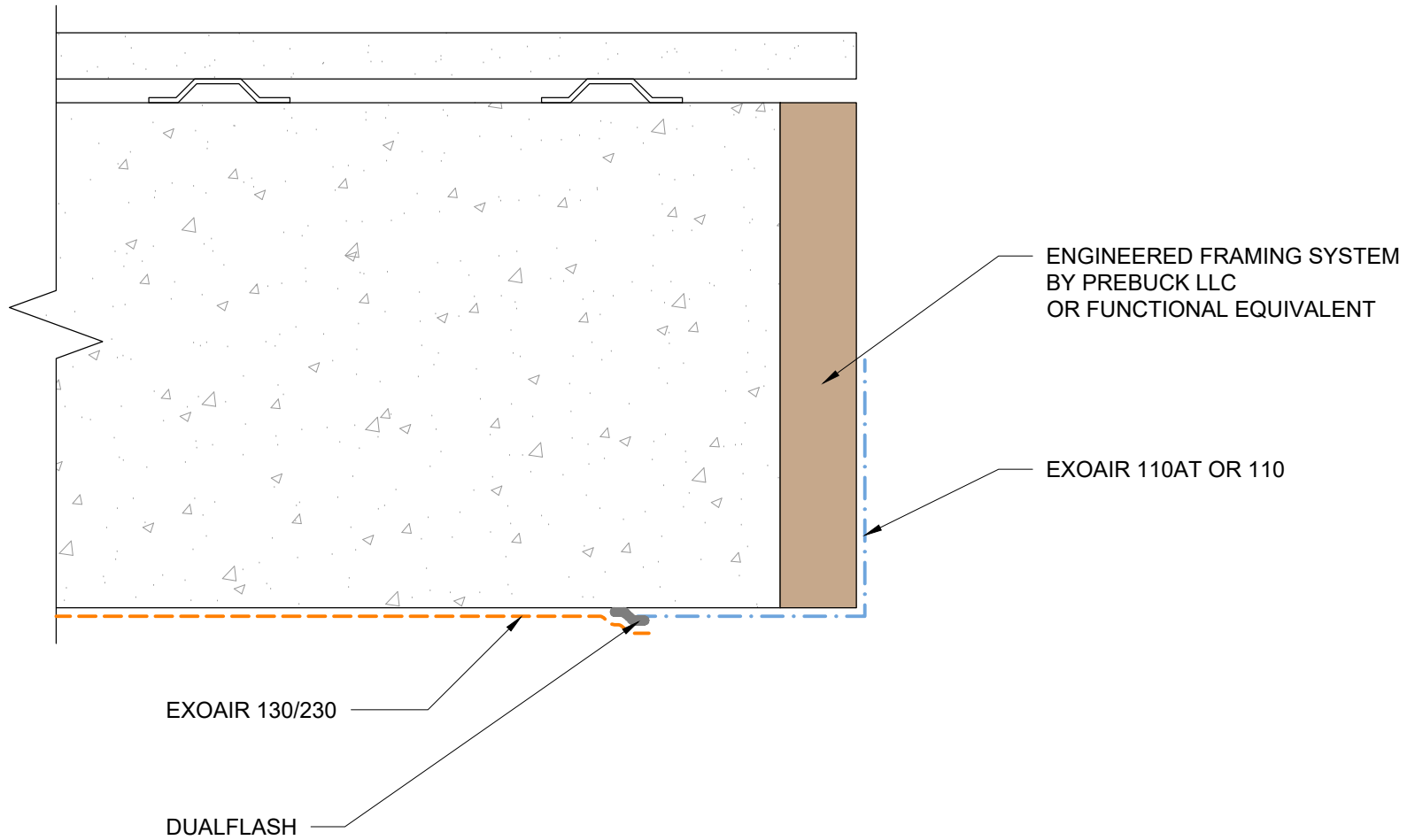


NOTES: WINDOW AND BUILDING FACADE NOT SHOWN FOR CLARITY

This detail is for general informational purposes only. The project design professional determines, in its sole discretion, whether this detail or a functionally equivalent detail is best suited for the project with respect to any architecture, engineering, and design requirements, including any local building code requirements. If this document is not reviewed and the product is not approved for use by a licensed design professional, the customer agrees that the detail may contain substantive flaws requiring correction, and hereby releases Tremco CPG Inc. from any and all liability related to the design and installation of the product. This detail is subject to change without notice. Contact Tremco to ensure you have the most recent version.

DualFlash



 Tremco Technical Support: 866-209-2404	Detail: Jamb			File Name: DF-WJ-01	 Construction Products Group
	Drawn by: HDE	Checked by: SG	Scale: NTS		
	Revision #: 0	Revised by: NA	Date: 5/15/2024		
<small>www.tremcocpg.com</small>					



NOTES: WINDOW AND BUILDING FACADE NOT SHOWN FOR CLARITY
 EXOAIR PRIMER MUST BE USED WITH EXOAIR 110

This detail is for general informational purposes, only. The project design professional determines, in its sole discretion, whether this detail or a functionally equivalent detail is best suited for the project with respect to any architecture, engineering, and design requirements, including any local building code requirements. If this document is not reviewed and the product is not approved for use by a licensed design professional, the customer agrees that the detail may contain substantive flaws requiring correction, and hereby releases Tremco CPG Inc. from any and all liability related to the design and installation of the product. This detail is subject to change without notice. Contact Tremco to ensure you have the most recent version.

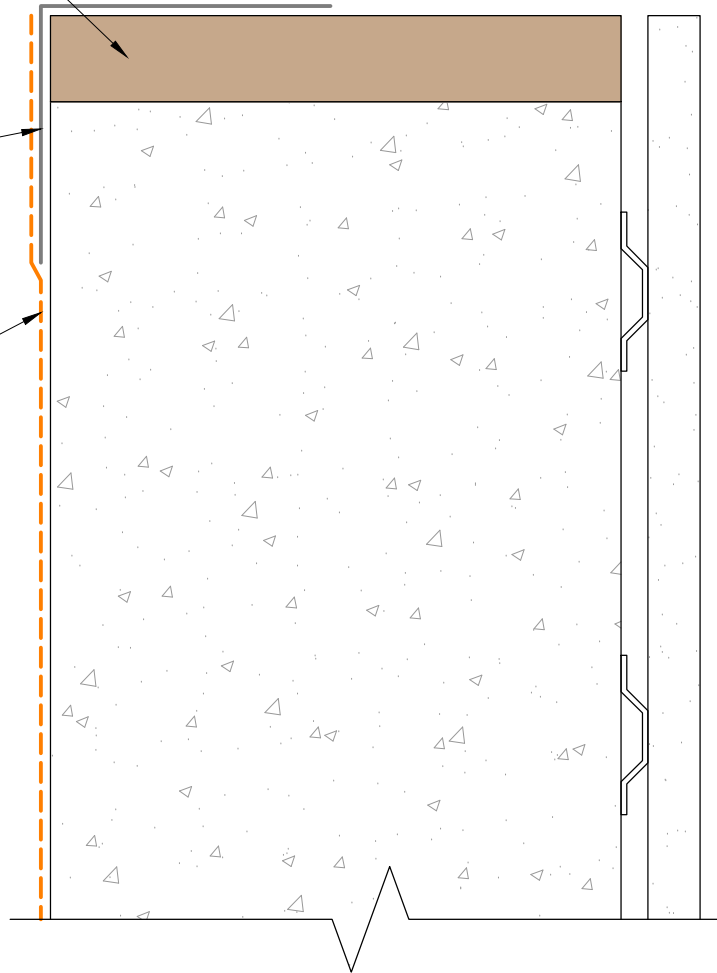
DualFlash

 Tremco Technical Support: 866-209-2404	Detail: Jamb - ExoAir 110/110AT Option			File Name: DF-WJ-02	 Construction Products Group
	Drawn by: HDE	Checked by: SG	Scale: NTS		
	Revision #: 0	Revised by: NA	Date: 5/15/2024		
<small>www.tremcocpg.com</small>					

ENGINEERED FRAMING SYSTEM
BY PREBUCK LLC
OR FUNCTIONAL EQUIVALENT

DUALFLASH

EXOAIR 130/230



NOTES: WINDOW AND BUILDING FACADE NOT SHOWN FOR CLARITY

This detail is for general informational purposes only. The project design professional determines, in its sole discretion, whether this detail or a functionally equivalent detail is best suited for the project with respect to any architecture, engineering, and design requirements, including any local building code requirements. If this document is not reviewed and the product is not approved for use by a licensed design professional, the customer agrees that the detail may contain substantive flaws requiring correction, and hereby releases Tremco CPG Inc. from any and all liability related to the design and installation of the product. This detail is subject to change without notice. Contact Tremco to ensure you have the most recent version.

DualFlash



Tremco Technical Support: 866-209-2404

Detail: Jamb

Drawn by: HDE

Revision #: 0

Checked by: SG

Revised by: NA

Scale: NTS

Date: 5/15/2024

File Name:

DF-WS-01



Construction Products Group

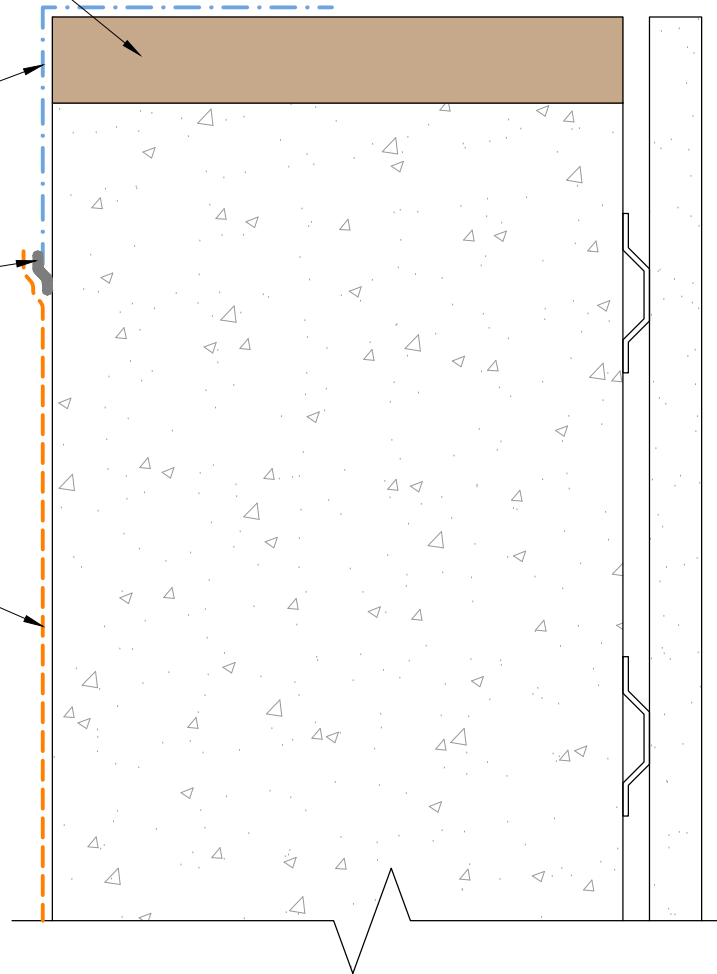
www.tremcocpg.com

ENGINEERED FRAMING SYSTEM
BY PREBUCK LLC
OR FUNCTIONAL EQUIVALENT

EXOAIR 110AT OR 110

DUALFLASH

EXOAIR 130/230



NOTES: WINDOW AND BUILDING FACADE NOT SHOWN FOR CLARITY

EXOAIR PRIMER MUST BE USED WITH EXOAIR 110

This detail is for general informational purposes only. The project design professional determines, in its sole discretion, whether this detail or a functionally equivalent detail is best suited for the project with respect to any architecture, engineering, and design requirements, including any local building code requirements. If this document is not reviewed and the product is not approved for use by a licensed design professional, the customer agrees that the detail may contain substantive flaws requiring correction, and hereby releases Tremco CPG Inc. from any and all liability related to the design and installation of the product. This detail is subject to change without notice. Contact Tremco to ensure you have the most recent version.

DualFlash



Tremco Technical Support: 866-209-2404

Detail: Jamb - ExoAir 110/110AT Option

Drawn by: HDE

Revision #: 0

Checked by: SG

Revised by: NA

Scale: NTS

Date: 5/15/2024

File Name:

DF-WS-02



Construction Products Group

www.tremcocpg.com